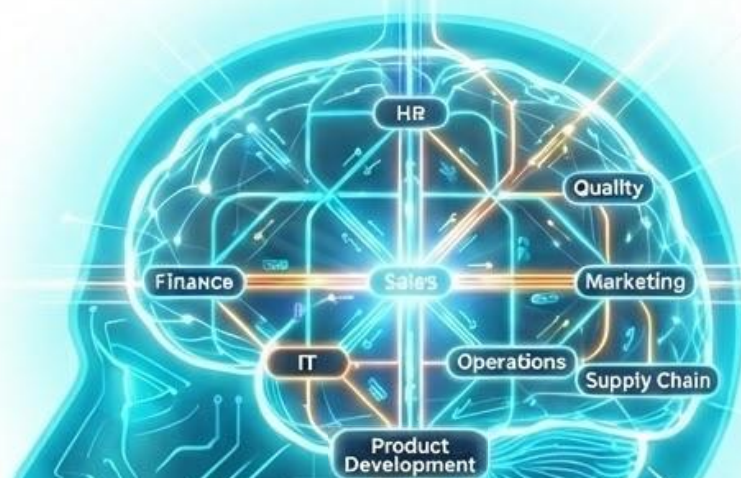


THE COGNITION ERA ENTERPRISE

Navigating the Future with Structure,
AI, and Systemic Thinking.



Jorge Tovar

The Cognition Era & The MetroMap Advantage

The Vision

As we transition from the **Information Era** to the **Cognition Era**, the competitive advantage of an organization shifts from "owning data" to "**thinking better.**" This document outlines a proven methodology to bridge the gap between AI potential and operational reality through the **MetroMap Digital Backbone.**

What you will find in this document:

- 1. The global consensus (The context gap):**
A synthesis of why leading firms like **Gartner, McKinsey, and BCG** agree that AI "hallucinations" are not a technical failure, but a lack of **structured business context.** I address the systemic risk of unguided AI.
- 2. Hallucination-free AI (The foundation):**
An introduction to the "**Y=f(x)**" logic. By providing AI with the formal ontology of your business, We transform "plausible guesses" into **reliable, data-driven intelligence** across HR, Finance, Operations, and Sales.
- 3. The evolution to cognitive management:**
A deep dive into how the **MetroMap** transforms your organization into a "thinking system." Learn how to incorporate AI as a **cognitive manager** to anticipate second-order effects and protect human leadership from "information overload."
- 4. Real-world benefits (Practical outcomes):**
Evidence-based results in process optimization, risk mitigation, and execution coherence. From automated **RACI matrix** updates to optimized **Daily Directional Sessions (DDS)**, we show how context drives execution.
- 5. The quantified business case:**
A conservative financial projection demonstrating a potential **USD \$4.5M - \$5.7M** annual value for large organizations, achieving a **5-10x ROI** within the first year by leveraging existing M365/Copilot or Google/NotebookLM infrastructure.

Conclusion

This is not a technical upgrade; it is a **cognitive infrastructure** shift. In the Era of Cognition, the question is no longer how advanced your AI is, but: **Is your organization designed to think... or just to execute?**

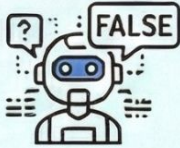
Kind regards,

Jorge Tovar

Consultant in Operational Excellence, Management Systems & AI
jorge@aioncenter.com | +52 3323 109812

THE GLOBAL CONSENSUS: THE AI 'CONTEXT GAP' & DECISION RISK

Leading Consultancies Agree: Lack of Structured Context is the Primary Barrier to Reliable Enterprise AI.



GARTNER: "Confidently Wrong" Answers

Generates plausible but incorrect outputs due to missing structured business context.



BCG: Scaling Failure & Trust Gap

Value breaks in production without an "enterprise-wide context layer" for trustworthy AI.



**THE CORE PROBLEM:
UNRELIABLE DECISIONS
& SYSTEMIC RISK**
(AI lacks business understanding)



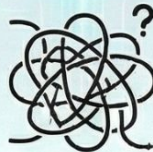
MCKINSEY: Systemic Risk Amplified

Ignores "second-order effects" of isolated recommendations, leading to sub-optimal large-scale decisions.



DELOITTE: Lack of Traceability

Critical inability to explain or trace the reasoning behind AI-assisted decisions.



MIT SLOAN / HBR: Cognitive Failure

Fails at "contextual understanding" and distinguishing system signals from noise.

THE STRATEGIC GAP: The industry agrees—"Hallucinations" are a symptom of missing *context representation*. Yet, a standardized operational artifact to solve this remains undefined.

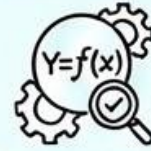
AI FREE HALLUCINATION

MetroMap “ $Y=f(x)$ ” is the key to generating it



The AI Hallucination Problem

Isolated data inputs without context lead to inaccurate and unreliable responses in AI systems.



The Six Sigma Foundation ($Y=f(x)$)

20+ years of experience confirm: A result (Y) is always a function of its factors (x). Data-driven reliability.



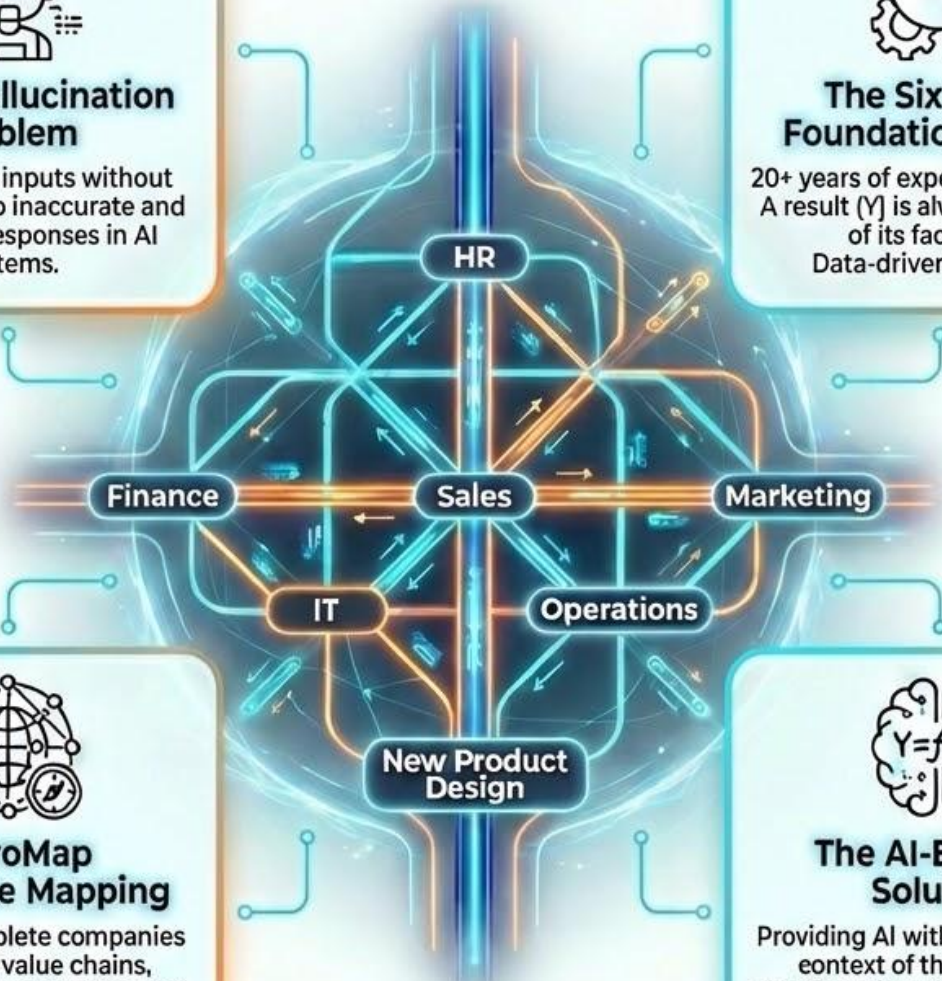
MetroMap Enterprise Mapping

Mapping complete companies to visualise value chains, understand opportunities, and establish improvement plans.



The AI-Enabled Solution

Providing AI with the full ' $Y=f(x)$ ' context of the enterprise significantly enhances response quality, eliminating hallucinations.



CONCLUSION & EXPERTISE

Today, leveraging 25 years of operational excellence experience with companies like GE and Philip Morris, we structure enterprise ' $Y=f(x)$ ' models using AI. This enables the opportunity for hallucination-free Artificial Intelligence, built on a foundation of deep contextual understanding.

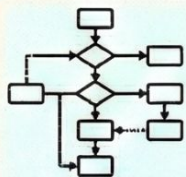
By: Jorge Tovar

Mail: jorge@aioncenter.com | Phone: +52 3323109812

AI, MetroMap, and the Evolution of Management Systems Towards the Cognition Era

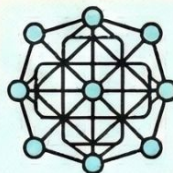
Leveraging Structure for Better Decisions and Systemic Understanding

THE CHALLENGE: AI POTENTIAL VS. STRUCTURAL LIMITATION



NOISE

Traditional maps are linear, fragmented, and local. They create noise for AI, not context.



DIGITAL BACKBONE

MetroMap builds a structured Digital Backbone, integrating processes, systems, and KPIs.

METROMAP: THE COGNITIVE ENGINE



Defines Core vs. Peripheral



Makes Dependencies Explicit



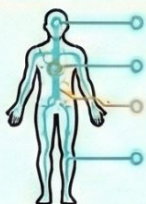
Exposes Tensions & Bottlenecks



Enables Systemic Reasoning

Provokes cognition by revealing relationships, hierarchies, and consequences, not just instructions.

AI AS A COGNITIVE MANAGER & BUSINESS ONTOLOGY



Provides the business "ontology": Head (Strategy), Trunk (Central Systems), Limbs (Execution).

Without it, AI lacks context.



Incorporates AI to analyze systemic patterns, anticipate second-order effects, and suggest coherent decisions.

TRANSITION TO THE COGNITION ERA



INFORMATION ERA
(Owning Data)

COGNITION ERA
(Thinking Better)



Value Shift to Cognition Quotient (CQ)



Management as Orchestration



Protection Against Cognitive Atrophy



New Metrics: Quality of Thought

CONCLUSION: INFRASTRUCTURE FOR THINKING

MetroMap is not just for improvement; it's cognitive infrastructure. It enables AI to think with context and leaders to think in systems.

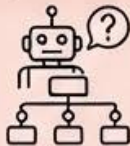
Is your organization designed to think... or just to execute?

REAL-WORLD BENEFITS: METROMAP IN ACTION

Aligned with Problems Identified by Leading Consultancies
(Gartner, McKinsey, Deloitte, BCG)

CONSULTANCY-IDENTIFIED PROBLEM

1. FROM "AI WITHOUT CONTEXT" TO CORRECT OPERATIONAL DECISIONS (Gartner / McKinsey: lack of structured context)



AI recommends without understanding:

- Real processes,
- Effective roles,
- Dependencies.

METROMAP REAL-WORLD BENEFITS

BENEFITS WITH METROMAP

(Operational & Cognitivs)



- ✓ Timely Job Description updates on process improvement.
- ✓ Assertive RACI matrix recommendations based on real operations.
- ✓ Deep relational analysis identifying invisible dependencies.
- ✓ Proper activity prioritization, avoiding local optimization.

VALUE GENERATED

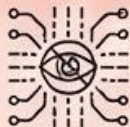
VALUE GENERATED

(Tangible Outcomes)



- Less organizational ambiguity.
- Less inter-area friction.
- Fewer reworks due to undefined roles.

2. SILENT RISKS & ERROR REDUCTION (Deloitte: AI risk, governance, lass of trust)



AI errors:

- Not evident.
- Detected late,
- Scale fast.

BENEFITS WITH METROMAP

- ✓ Early warnings of operational issues before KPI impact.
- ✓ Alerts for missing controls in critical processes.
- ✓ Better traceability of non-standard operations.
- ✓ Concrete process improvement recommendations (cause-effect).

VALUE GENERATED



- Lower operational risk.
- Lower cost of late correction.
- Higher trust in AI-assisted decisions.

3. BETTER TECHNICAL & ENGINEERING DECISIONS (McKinsey / BCG: second-order effects, scaling issues)



Technical decisions taken:

- In silos,
- Without clear systemic impact.

BENEFITS WITH METROMAP



- ✓ Recommendations for engineering changes considering cross-impacts.
- ✓ Improved product design communication (Engineering, Ops, Business).
- ✓ Better supplier communication aligned with technical & operational expectations.

VALUE GENERATED



- Less technical rework.
- Fewer failures due to miscommunication.
- Better execution quality & speed.

4. OPTIMIZATION OF BUSINESS RHYTHM (Gartner / MIT Sloan: execution coherence)



Execution becomes erratic:

- Too many meetings,
- Poorly focused,
- Decisions without follow-up.

BENEFITS WITH METROMAP



- ✓ Suggestion & optimization of business rhythms: DDS (Daily Directional Sessions), WDS (Weekly Directional Sessions).
- ✓ Meetings aligned to real processes & decisions.
- ✓ Better coordination among Operation, Support, and Direction.

VALUE GENERATED



- Less time wasted in meetings.
- Better execution cadence.
- Decisions with clear follow-up.

5. DIRECT FINANCIAL & STRATEGIC IMPACT (CFO lons)



- Difficult to estimate real financial Impact.
- Poorly prioritized projects.
- Unclear AI ROI.

BENEFITS WITH METROMAP



- ✓ Better financial estimation of projects by understanding real dependencies.
- ✓ Improved directive strategy with systemic vision.
- ✓ Better prioritization of investments & activities.
- ✓ Improved cross-departmental collaboration, reducing hidden costs.

VALUE GENERATED



- Greater financial predictability.
- Lower risk of cost overruns.
- Better return on strategic projects.

EXECUTIVE TAKEAWAY:

What consultancies describe as lack of context, second-order effects and AI risk, we see operationally solved through MetroMap — with tangible improvements in processes, roles, decisions and financial outcomes.

EXECUTIVE SUMMARY:

MetroMap demonstrates in practice what consultancies describe in theory:

- ✓ More correct decisions,
- ✓ Better coordination,
- ✓ Less operational risk,
- ✓ Better execution,
- ✓ Better organizational,
- ✓ Better financial impact.

QUANTIFIED BUSINESS CASE: HALLUCINATION-FREE AI VIA METROMAP

From Sub-Optimal AI to High-Impact Cognitive Management



**BEFORE METROMAP:
SUB-OPTIMAL AI
REALITY**

BASELINE ASSUMPTIONS

(Typical Large Org)

- 300–500 Managers using GenAI
- USD 120–15–50/hr cost per manager
- AI Deployed (M365/Copilot)
- Silent, untracked decision errors

KEY PROBLEM METRICS



Decision Rework: 15–25% of decisions require rework rate to poor context.



AI Trusts: Managers validate require 30–50% of AI outputs.



Time Lost: 2–4 hours/week/per per manager validating AI guidance.



Second-Order Effects: High systemic risk from local optimization.



AI ROI: Sub-optimal (tactical use only).



**AFTER METROMAP:
COGNITIVE AI
IMPACT**

METROMAP IMPACT – KPIs



DECISION QUALITY

- ↓ 30–50% rework reduction.
- ↑ 25–40% decision consistency.

- **KPI:** % decisions requiring. Escalation rate.



PRODUCTIVITY & TIME-TO-VALUE

- ↓ 1.5–2.5 hours saved manager manager.
- ↓ Faster execution executes.

- **KPI:** Managerial time saved, Cycle time.



AI EFFECTIVENESS & TRUST

- ↓ 20–35% AI adoption.
- % "Confidently work" outputs.

- **KPI:** % accepted with low Useride, Usage rate.



RISK & GOVERNANCE

- ↓ Systemic risk & exposure.
- ↓ Improved Iracrovability.

- **KPI:** % AI escalations, Audit findings.

FINANCIAL IMPACT (Conservative Estimate)



PRODUCTIVITY GAIN

28,800 hours/year recovered (300 mgrs x 2 hrs wr 48 xs) ⇒ **USD 3.7M/year** capacity.



DECISION ERROR COST AVOIDANCE

Avoiding 1–2 major major errors (est. (\$500k–1M)) ⇒ **USD 1-2M/year** risk avoidance.



TOTAL ANNUAL VALUE

✓ **USD 4.5-5.77M/year** (conservative).



INVESTMENT PROFILE

- No replacement of existing AI.
- Leverages M365/Copilot.
- Focused on structure, not infra.
- **Payback:** < 6 months.
- **ROI:** 5-10x Within Year 1.

**The real value of fixing AI hallucinations
is better decisions, lower risk, and stronger leadership.**

The Cognition Era & The MetroMap Advantage



About the Author

Thank you for taking the time to review this document.

I bring over 25 years of global experience leading end-to-end Supply Chain and Operational Excellence transformations across the Americas, Europe, and Asia. Throughout my career at Philip Morris International, General Electric, Schneider Electric, Microsoft, and other global organizations, I have architected operating models that directly connect operational execution with financial performance.

As a former Corporate Master Black Belt and Global OpEx Strategy Architect, I have delivered more than \$125M in verified financial impact, led transformations across 200+ facilities, and mentored over 1,000 Black and Green Belts worldwide.

Today, through AI-MetroMap architectures, I focus on integrating operational intelligence, governance, and AI orchestration into structured business systems that enhance decision quality, reduce risk, and unlock measurable value.

I look forward to the opportunity to support your organization's next stage of transformation.

— **Jorge Tovar**



© 2026 IA-MetroMap Methodology. All rights reserved.

Jorge Tovar | Phone: +52 3323109812 | Mail: jorge@aioncenter.com

| LinkedIn: <https://www.linkedin.com/in/jorgetovar/>